

HALLING VIEW



 - Picturesque Halling : Photo courtesy of Jayson Worsfold

SANTA'S GROTTO IS COMING TO HALLING



Thursday 22nd Dec
4pm-8pm

see inside for
details

It's amazing what comes out of a casual conversation between friends. We didn't have a Funday this year but we did have the opening of the new equipment in the lower recreation ground and when it was mentioned to me that plans were being made for a Christmas event, I stole the idea and we have developed it! The result you can see above. Father Christmas is going to make a very special visit to Halling on 22nd December at The Bishop's Palace. We hope you will enjoy the magical event that we are planning come rain or shine. We have succeeded in obtaining funding from Halling Association for a human snow globe and the Parish Council are funding the decorations, reindeer and a couple of children's rides. All the children visiting Santa will receive a small gift bag and will be able to tell him personally what they are wishing for him to bring on Christmas Eve. You will be able to recognise all the Parish Councillors attending, as they will be wearing Santa hats with HPC XMAS HELPER on them. Santa's elves will also be hiding some toys around the area for children to take home. Santa's Grotto and the rides are free but there will be charges for refreshments on the evening and these providers will be giving to charities of their choice.

The village Christmas Tree will be going up on Sat 3rd December, but because of the Grotto event, we will not be having a lighting ceremony. The children of Bo-Peeps will be singing their annual carols by Santa's Grotto on the 22nd at 4pm. There is currently nothing extra to report on the sale of the fire station. We are hoping that the planning applications that have been submitted by the Baptist Chapel will be concluded by mid December.

The cows have left the Marsh but now it's raining the paths will become muddy, so don't forget your wellies.

Thank you to everyone who has donated to the Poppy Appeal. The amount raised by the Village was £517.47p
Thanks also to everyone who voted with their little red discs for Halling in the Tesco Bags of Help, again we will let you know the results from Tesco. Please keep an eye on village notice boards and our website for local information.

Councillor Chris Herbert, Chairman

Clerk's Office Opening Hours:

Mon & Fri 9.30am – 12pm / Wed 9.30am – 4pm

Halling Community Centre

01634 241551

hallingclerk@btconnect.com

<http://www.halling-pc.co.uk>

Bill Swan, Clerk

Please read noticeboards and see website for details of next HPC meeting

HALLNG PARISH COUNCIL

Lower Ward: Councillor Les Hitchcock
Councillor Chris Herbert
Councillor Andy Simpson
Councillor Richard Thorne
Councillor Kelly Talbot
Councillor Paul Crispe

Upper Ward: Councillor Matt Fearn
Councillor George Wenham
Councillor Trevor Reynolds

North Ward: Councillor Michael Leverington
Vacancy



Parish Councillors are looking into ways of helping elderly or disabled residents living in Upper or North Halling to attend the Santa's Grotto event at the Bishops Palace, on the evening of 22 December 16.

If you require such assistance, please contact Bill Swan in the Parish Council Office on 01634 241551 no later than Thursday 15th December giving your name, address and a contact number, so we can make suitable arrangements with you.



Guy Salmon Land Rover Charity Golf Day
Friday, 28 October 2016



I was asked again to help organise the second charity event for Guy Salmon Land Rover at the Kings Hill Golf Club. With help from my wife Kim, we managed to get some amazing friends and colleagues to sponsor holes and help make an amazing day a great one and raise a ton of money for the Heart Of Kent Hospice. I would like to thank the local companies that gave generously, Fleet Luxury Packaging, Big Motoring World, Duke of Wellington PH, Imperial Dynasty, Alliance Fire Safety, Five Bells PH, ATW Security, Castledene and we even had a PGA Professional golfer offer to play a round of golf with a lucky golfer. Other companies entered teams to take part in a Texas Scramble fun golf day with prizes on nearly every hole. With a special mention to Guy Salmon Land Rover and my wife, who managed to get at the last minute Bobby Davro, he didn't disappoint in any way managing to verbally assassinate nearly everyone in the room! Over 60 people attended the event including James and Ola Jordan and between us it looks like we have raised just over £3,500.00. A superb effort and the plans for next year's event

has already begun with plans to tinker with the format once again allowing for the casual golfer to play with the serious ones and not feel pressurised. I look forward to seeing everyone at next year's event and any golfers or local businesses that wish to take part or find out more, please don't hesitate to get in contact with me via the Halling Parish Council web site.

Councillor A Simpson

OPEN DAY

Thursday 8th December 2016



Halling Primary School,
Howlsmere Close, Halling, Kent.

ME2 1ER

Tel: 01634 240258

www.halling.medway@dbprimary.com

email: office@halling.medway.sch.uk

***Parents of prospective pupils due to start school in September 2017 and 2018 are warmly invited to visit us and see our friendly, caring, village school in action.**

*Please note. Because of the important information we give you during this open day we ask that no children accompany you. We will be inviting the children to story time sessions and details of this will be given during the open day.

@ 9.45am- 11.15am

There will be a tour of the school, followed by a presentation by the Head Teacher and Early Years Foundation Stage Leader and then an opportunity to have a chat and refreshments.

"outstanding opportunities for learning in the reception classes ensure children get off to an excellent start. Teaching is of a high quality and the environment is exciting and very well resourced" Ofsted 2015

HALLING ASSOCIATION
SMALL PROJECTS FUND

Who is Halling Association?

HA is a local partnership of the following groups who contribute monies to fund local projects:

HALLING PARISH COUNCIL

Medway Council

Tarmac

Redrow

Trenport

Grants Criteria

This grant scheme is run by the Halling Association. This is a local partnership of private, public and voluntary organisations that supports projects for the benefit of the parish of Halling.

Who can apply?

- Only groups and organisations based in Halling, or other groups who want to carry out a project in the parish, or to benefit local residents.

How much funding is available?

- Grants of up to a maximum of £250 are available.
- There is a total budget of £1500 available for small projects in one year.

How long do we have to wait to hear the outcome of our application?

- Providing we have all the information we need, you should hear within 6 weeks of submitting the form.

What sort of projects are eligible?

- The Halling Association will be open to helping a wide range of projects, such as events or activities being organised by a group, improvements to a community building, or environmental projects.

How can we apply for a grant?

<http://www.medway.gov.uk/thecouncilanddemocracy/parishcouncils/hallingassociationproject.aspx>

Medway Council officers:

Ross Crayford : 01634 331629

Email: ross.crayford@medway.gov.uk

Address: Planning Policy, Medway Council, Gun Wharf, Dock Road, Chatham, Kent, ME4 4TR



Vandana and Kiran would like to thank all the villagers who voted for them. They were invited to Lenham in October to collect their prestigious award. Halling Parish Council would like to congratulate them on behalf of Halling Village.

Cupcakes made with Passion
Tasha Cupcake Denney

Halling
07716871320
Cupcakesmadewithpassion@yahoo.com
Email/phone for prices special price for 12 Cupcakes from £15

HALLING MEDICAL CENTRE – 01634 240238

Monday	8.30 – 1.30pm	3.30pm – 6.30pm
Tuesday	8.30 – 1.30pm	3.30pm – 8.00pm
Wednesday	8.30 – 1.30pm	Closed
Thursday	7.15 – 1.30pm	3.30pm – 7.00pm
Friday	8.30 – 1.30pm	Closed

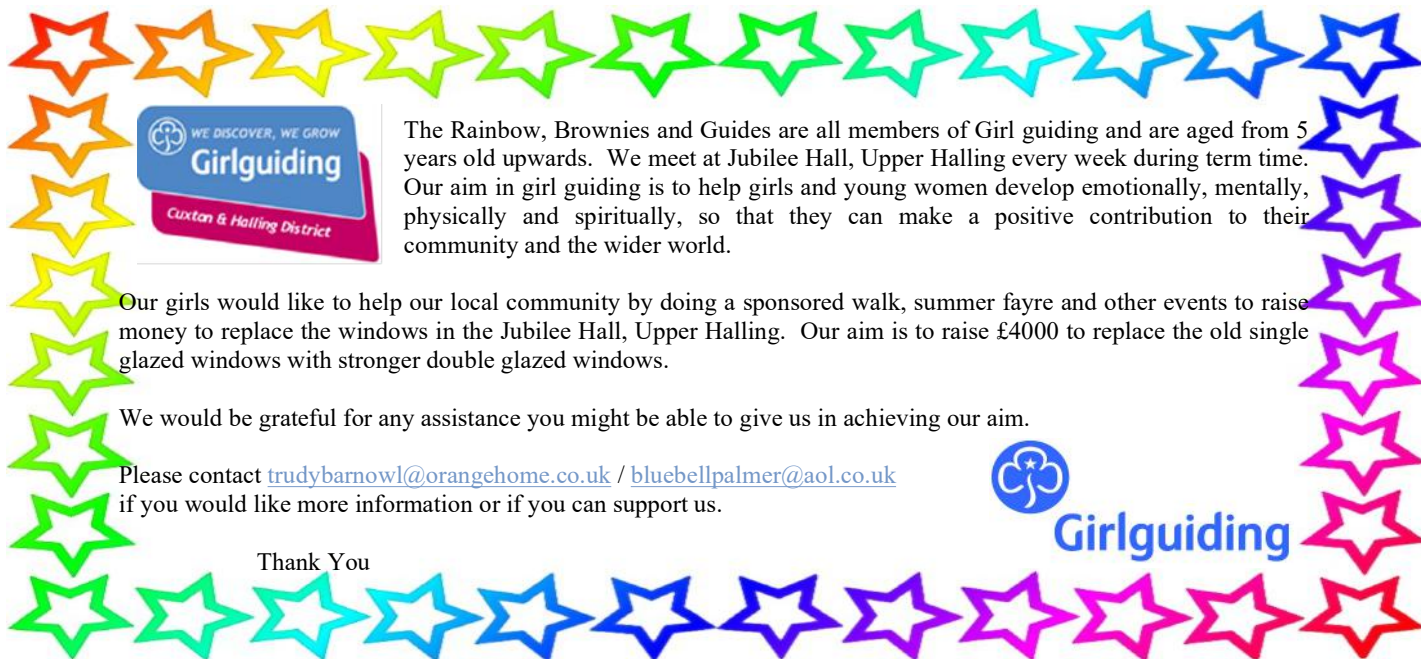
CUXTON MEDICAL CENTRE – 01634 714317

Monday	8.30 – 1.30pm	3.30pm – 6.30pm
Tuesday	8.30 – 1.30pm	Closed
Wednesday	8.30 – 1.30pm	3.30pm – 7.00pm
Thursday	8.30 – 1.30pm	Closed
Friday	8.30 – 1.30pm	3.30pm – 7.00pm

Halling Historical Society
present a Diary for 2017 at
The Jubilee Hall, Browndens Road, Upper Halling

- 16h February 2017 Dr Ann Kneif - Land Army 7.30pm
- 20th April 2017 Penny Harris - Potholes, Pits and Paradise 7.30pm
- 15th June 2017 Wilf Lower - T.V Golden Years 7.30pm
- 17th August 2017 Peter Hartley - Diamond Queen 7.30pm
- 19th October 2017 Stuart Robinson - Curiosities of London 7.30pm
- 14th December 2017 Wilf Lower - Last Days of the Music Hall 7.30pm

Tea, coffee and raffle. All visitors welcome £2.50



The Rainbow, Brownies and Guides are all members of Girl guiding and are aged from 5 years old upwards. We meet at Jubilee Hall, Upper Halling every week during term time. Our aim in girl guiding is to help girls and young women develop emotionally, mentally, physically and spiritually, so that they can make a positive contribution to their community and the wider world.

Our girls would like to help our local community by doing a sponsored walk, summer fayre and other events to raise money to replace the windows in the Jubilee Hall, Upper Halling. Our aim is to raise £4000 to replace the old single glazed windows with stronger double glazed windows.

We would be grateful for any assistance you might be able to give us in achieving our aim.

Please contact trudybarnowl@orangehome.co.uk / bluebellpalmer@aol.co.uk if you would like more information or if you can support us.



Thank You

love... a slimmer
Christmas with
Slimming World

Join a friendly group near you to make your weight loss dreams come true

**HALLING
 COMMUNITY CENTRE**

5.30pm – 7pm
7.30pm – 9pm

Ring Sharon:
01634 243198
07909 051151

slimmingworld.co.uk
 f t @ 0344 897 8000

SNODLAND

**BEANEYS MEDWAY BAKERY
 AND TEA ROOM**

FRESH BREAD - CAKES - PASTRIES
HOT SAUSAGE ROLLS - PIES - PASTIES

**DELIGHTFUL CELEBRATION
 CAKES**

MEDWAY 240253

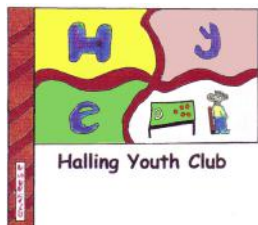
Halling Refuse Collections over the Christmas Period:

Normal Collection day

Revised Collection day

Thursday 29th Dec 16
Thursday 5th Jan 17

Friday 30th Dec 16
Friday 6th Jan 17



CHILDREN IN NEED 2016

We would like to say a big “THANK YOU” to everyone who helped us raise £577.76 for PUDSEY at our open event on 18th November.

We would like to thank Iceland, The Entertainer, Sainsburys, Gravity, Chris, Kate, Clare, Sandra and everyone who provided prizes. Thanks to Bellyflops who provided the bouncy castle and sumo suits, Ruth for her burgers, and those who provided the cakes.

Special thanks go to all the volunteers who gave up their precious time on Friday evening, and helped the evening run smoothly.

ONCE AGAIN “THANK YOU”.

Paula and Les
Joint Leaders

If God Exists, Why Does He Allow Children to Suffer?

I get asked this question a lot (including its various other forms), and even though there are many things to think carefully about when touching on this difficult and emotive subject, I'd like you to consider the following: If there is no creator, why does suffering even matter? If there is no God, we are all just part of the animal kingdom; in fact, we all are just a collection of atoms and molecules, and a bunch of chemical reactions. A child dying is no different from a goldfinch taken down by a cat, or a fly captured by a spider. Human life would be worth no more than any other life.

But this is not how the world around us works. Suffering matters to all of us. We all know that suffering is a problem and that it is wrong. And that's the whole point. If we decide to conclude that suffering is our evidence that there isn't a God, why is suffering wrong in the first place? On the contrary, suffering is only wrong because there is a God.

The Bible doesn't shy away from the reality of suffering and evil around us, and it tells us that pain, suffering and even death are invaders in our lives. Anyone who has suffered a bereavement knows the painful reality of this indiscriminate intruder! And God is not silent, neither oblivious, to suffering! God himself suffered when he lived on earth as a man in the person of his Son, Jesus Christ. Even though Jesus lived a perfect life with no sin, he died an excruciating death on a cross to save us from our sins, in order to make it possible for us to get right with God. He himself said that he came to give his life as a ransom for many (Mark 10:45). Not only did he die on the cross, but he rose again from the dead, thus giving us a living hope — yes, even in the midst of suffering and pain! The certainty that is found in the Christmas story points us to the fact that, one day, those who trust him will live with him in a world where suffering will be no more. Will **you** trust him?

The great thing about the Christmas story is that it is real and powerful.

Now, even though human beings are capable of causing a great deal of pain to the most vulnerable, it is also marvellous when people get together to make a difference in the world around us. Let us all make a difference this year! Why not bring a smile to a child this Christmas? At our Carol Service at the *Halling Community Centre* on Saturday 17 December at 6 pm, we will gather children's gifts, which will be taken to the *Demelza House Children's Hospice* in Sittingbourne. They would welcome sensory toys, art and craft materials, toiletries (eg. beauty products, nail varnishes, etc.), children's books, and even clothing. Any surplus gifts would be passed on to their Hospice at Eltham in South East London, or sold in their charity shops in Rochester, Chatham and Sittingbourne. On this occasion, we would ask that the donated gifts are new.

Do you have any more questions on the subject? Are you going through suffering at this present time? Do feel free to get in touch. I'd love to hear from you.

Praying for the eternal good of Halling.

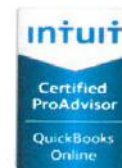
Kevin Félix Hollington
Pastor of Halling Baptist Church
5 Vicarage Road, M: [07868 182423](tel:07868182423)
hallingbaptist.org.uk

Du4Accounts



All your accounting needs!

- Self-Assessments & on-line submission
- Bookkeeping
- VAT returns
- Payrolls – PAYE & CIS
- Accounts preparation
- Auto Enrolment – workplace pensions admin
- HMR&C on-line returns



Call Carol today!

- Sage Accounts
- QuickBooks
- Xero (Cloud) Software
- Microsoft Excel

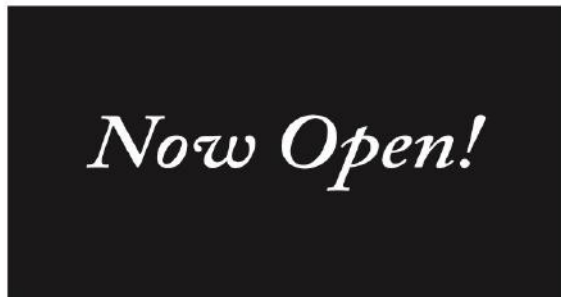
Carol Dufour
Du4Accounts
75 Kent Road
Halling
Rochester
Kent
ME2 1AT

Phone 01634 244807
Mobile 07765 351064
Email: Carol@du4accounts.co.uk

Du4Accounts
All your accounting needs!



01634 786996
www.thehairloungehalling.co.uk



Opening Times

Monday	12pm - 7pm	Tuesday	9am - 4pm
Wednesday	9am - 5pm	Thursday	9am - 7pm
Friday	9am - 7pm	Saturday	8am - 4.30pm

BEV ROUSSEAU THERAPIES

HELLO!

I am a qualified practitioner in Life Coaching, NLP, Clinical Hypnotherapy and Tapping (EFT). I use a mixture of these techniques to help people resolve all kinds of emotional and physical issues. Issues such as phobias, weight, motivation, smoking, anxiety, stress, pain, confidence, relationships – infact – almost anything you can think of!

INTRIGUED?

Then to find out more and to book an initial appointment, contact me **Beverley** on **01634 240190** or at beverlevann.wdd012@gmail.com

PLEASE LEAVE YOUR NAME AND CONTACT DETAILS CLEARLY TO ENABLE ME TO RETURN YOUR CALL.

Please include a brief outline of your issues.

The initial 1hr consultation is free and will include your personal needs; my fee structure and any questions you may have regarding my work. There will be no obligation to continue after the first session. Future sessions will be 1-1 1/2 hours depending on individual needs and are tailored to suit you personally. I am fully insured and CRB checked.



PETERS VILLAGE BRIDGE FACT FILE

- The bridge is valued at £19 million including construction, services and fees.
- It uses an elegant design that fits the surrounding countryside. The choice of concrete construction also upholds long term plans to create a fitting landmark for the area’s former industry.
- Due to local traffic sensitivities it was decided to build the concrete and steel structure in situ rather than transport large pre-fabricated components to the site.
- Two large temporary piers were built out from each bank so that heavy machinery could travel out over the water to assist construction.
- Cofferdams were used – barriers against the river waters – so that workers could work safely on the two oval bridge supports, while still allowing the river to flow freely.
- Vital statistics: the bridge is more than 18 double decker buses long (152.5m), the width of nearly two (13.7m) and carries a two-lane carriageway. The depth of the bridge superstructure ranges from 3.6m over the piers, to 1.4m at its shallowest.

Greenway briefly closed to traffic

Vehicle access to the new bridge from Wouldham via the Hall Road Greenway has been temporarily delayed by problems with the commissioning of a customised traffic light system, designed to speed bus traffic and minimise environmental impact.

Trenport Director Chris Hall said: “The Greenway opened to pedestrians, cyclists and horse riders as soon as the bridge was operational on Sept 15, but Kent County Council (KCC) stated that it was unsafe for vehicles until the traffic lights are fully operational. “Contractor BAM Nuttall and KCC Highways are working hard to resolve the problem – it is out of Trenport’s hands. “Of course, those who campaigned so vigorously to keep vehicles off the Greenway may be pleased by this situation, but the vast majority is not and we sincerely hope it can be resolved soon.”

Keeping you informed and how to contact us:

● www.trenport.co.uk

● Alternatively, please try enquiries@trenport.co.uk

● Your Ward and Parish Councillors, and local news publications are also regularly updated with news.

● People interested in a home at Peters Village are welcome to continue to register via our website OR would-be buyers can contact our first housebuilders direct by calling **Bellway on 01732 879768** or **Orbit on 0845 600**

2468



More than 130 people enjoyed a ‘sneak preview’ of the new Medway bridge between Wouldham and Halling, nearly a week before it opened officially.

Two walks, organised by Peters Village developer Trenport and its contractor Bam Nuttall, invited guests from all generations including 60 children from the village schools of Wouldham, Burham, Eccles and Halling – who crossed in the morning – and the four oldest residents of Wouldham and Halling, who were part of an adults’ walk in the afternoon.

For the latter, the walk was also a trip down memory lane as all four remembered the last time this stretch of the Medway was bridged – albeit temporarily – by a WWII Bailey Bridge erected by the Army. Wouldham’s oldest residents, Sidney (86) and Mary Cooper (91) said locals used it to get to jobs or just go for new walks. Mrs Cooper added: “We made new friends and councils fought to keep the bridge after the war, but I think they needed to keep the river open for big boats in those days.”

The couple’s counterparts on the opposite bank, Gladys Parris and Bet Hodkin, both 90, also remembered that other bridge: “They never should have taken it down,” said Mrs Parris, “But we’ve got this super new one now.”

The walk was also marked by a symbolic gesture from the Rectors of the parishes on each bank, who each exchanged a fish emblem made by their respective local schools.

The Rev Hugh Broadbent, Rector of Snodland, explained: “Apparently, there was some kind of fishing dispute between the fishermen of both banks, and the then Rector of Burham was responsible for calming things down – oil on troubled waters.” The Rev Mike Hayes, Rector of Burham and Wouldham, added: “So we thought it would be rather nice to use the new bridge to mark that ‘peace’ and exchange symbolic fish to herald what we expect to be a new era of co-operation between our parishes.”



The oldest residents from both banks: (left to right) Sidney and Mary Cooper, Gladys Parris and Bet Hodkin

SANTA IS COMING TO HALLING



Thursday
22nd December
2016
4pm - 8pm

Bishop's Palace
Ferry Road,
Opp Doctor's Surgery

Children of Bo-Peeps Pre-School
will be singing carol songs at
4pm to start the evening off



Stalls and refreshments



Kiddies
Ferris Wheel
and
Tea Cup
rides



Christmas in Halling

I wonder for how many years have people been celebrating Christmas in Halling? It was in the year 597 that St Augustine brought the Gospel to the people of Kent. King Aethelbert of Kent was married to a Christian, Queen Bertha, who already worshipped with her entourage at an old Roman Church in Canterbury (probably St Martin's). Most of the Saxons were pagans at that time but Aethelbert was obviously open to hearing the Gospel. He met Augustine and his monks where they landed near Ramsgate. A cross marks the supposed spot at Cliffe's End. The Christian missionaries quickly established their base at Canterbury and on Christmas Day 597, thousands were baptised in the River Stour. There's commitment for you! The message quickly spread throughout Kent and beyond and bishoprics were established in Rochester and London in the year 604. I don't know when people in Halling first became Christians, but we acquired the land on which St John's Church stands in 756.

People sometimes ask me how old the church is (meaning the building, not the people!). It's a hard question to answer. The original building was Saxon. I don't know if any of that survived, but the Normans effectively built a new church on the site in the C11. That has been added to and altered ever since. The Victorians enlarged it and redesigned the tower to give it its present shape. You can see pictures of what it was like before Victorian times in the vestry. The interior was re-modelled in the 1980s. If you want to know more about the building, go to <http://cuxtonandhalling.org.uk/> and look under Halling or come and see it for yourselves!

When I'm worshipping at St John's, I sometimes think of all those generations of Christians worshipping on this site for well over a thousand years. In many ways, their lives were very different from ours. Some of them still have descendants living in the village. Yet all Christians share the same faith in Jesus Christ. I think of those who worshiped Him on earth worshipping Him eternally in Heaven. They are in communion with us and our worship is joined with theirs. *Therefore with angels and archangels, and with all the company of heaven, we proclaim your great and glorious name, for ever praising you and saying Holy, holy, holy Lord, God of power and might, heaven and earth are full of your glory. Hosanna in the highest.*

It is wonderful to think of our eternal fellowship with Christians who have been dead for many centuries but who worshipped where we do, but it is even more marvellous to think of those we love but see no longer, our family members and friends who worshipped where we worship now and now themselves worship with us in heaven in all eternity.

The strategy was to establish Christian worship at the places and times where pagan festivals had previously taken place. There was probably a pagan shrine at the crossing of the River Medway. There were certainly pagan revelries to mark the depth of mid-Winter and the turning point of the year. The idea was that the existing festival of light and generosity and plenty, the spirit of peace and goodwill, should come to celebrate the Birth of Christ, the Light of the World, the Prince of Peace, the One Who meets our every need, the One Who inspires us to love our neighbours as ourselves, Jesus Who makes all these good things possible. The risk is that Jesus gets forgotten in all the other things we do at Christmas. We've thought about people celebrating Christmas in Halling in the past. How we celebrate in our generation is up to us. Roger Knight, Rector of Cuxton and Halling.

Christmas Services St John the Baptist Halling:

Sunday 18th December: 3.00 pm Carol Service & Christingle

Sunday 25th December (Christmas Day): 8.00 am Holy Communion

Christmas Services St Michael & All Angels Cuxton

Sunday 18th December: 6.30 pm Nine Lessons and Carols

Saturday 24th December: 5.00 pm Christingle, Nativity Play & Crib Service
11.00 pm Midnight Mass

Sunday 25th December (Christmas Day): 9.30 am Family Communion

A Puzzle

A few weeks ago, a very nice lady in Canada emailed to say that a 1924 calendar depicting the interior of Halling Church had just turned up among goods given to a church rummage sale in Montreal (St Matthias Westmount). Would we like it? She very kindly then posted it to me. It looks as if the C12 wall-painting on the chancel arch was then visible, which surprised me as we believed that it had only been uncovered in the 1940s. What is puzzling is how the calendar got to Canada. Several Halling families did emigrate to Canada between the two world wars and maybe somebody knows something about this. The inscription on the back says: *To Miss Cooper with best wishes for a Happy New Year from Annie.* Does anyone know who these people were?



UPPER HALLING RECREATION GROUND

Please make note of this for FEBRUARY 2017 The Parish Council will be carrying out public consultations in February with regard to renovation of the Upper Recreation Ground Play Area. All Upper Halling residents will be notified nearer the time and details put on HPC notice boards and on their website for all villagers who may wish to attend these discussions. If in the meantime you have any suggestions / ideas of new equipment suitable for the Upper Rec, please send them to the Council Office.

Maria Cook – Playground Consultant for HPC

Dementia Awareness Sessions:

Wednesday 14th December 16
 Wednesday 11th January 17

For more information visit www.caresimplifiedtd.co.uk you can of course contact me on : 01634 241488 or 07749968821 for more information.



Lisa Paterson

Dementia Cafe

An opportunity for individuals with memory loss and their caregivers to meet together for mutual support and fellowship.

...

Come and join us for coffee, chat, and a light lunch in a relaxed atmosphere where your worries and concerns can be talked over.

...

We ask for a contribution of £2:50 per session to cover the cost of lunch and refreshments.

...

There will also be activities, including some based on cognitive stimulation therapy, and guest speakers.

Dementia Social & Support Group

Every 2nd & 4th Wednesday

11am~1.30pm

**Christ Church Hall
Malling Rd, Snodland**

For further information on The Dementia Cafe please contact : Sue Brooks 01634 241350 (10am-8pm)
 June Wright 01634 241005 (10am – 8pm)
www.dementiawebkentandmedway.org.uk
www.dementiauk.org / www.ageuk.org.uk

We would like to bring to your attention a **free service for the residents of Medway** which enables them to test their risk potential from getting **type 2 diabetes**. Many people are at risk of developing type 2 diabetes without realising it. From the NHS viewpoint the growth of type 2 diabetes is a major concern and already accounts for around 10% of the budget - and it is likely to grow.

We all know that **prevention is better than cure** and so we are keen that as many people as possible take this [free test](#) to assess their risk and then if appropriate sign up to the free programmes that we are offering to help combat the type 2 diabetes threat.

Our Website is <http://www.medwaydiabetes.co.uk>

The free test page is <http://www.medwaydiabetes.co.uk/are-you-at-risk/>

Details about the programme can be found at <http://www.medwaydiabetes.co.uk/our-programme/>



Medway
 Serving You



PLEASE LOCK YOUR PROPERTY SECURELY AS THERE HAVE BEEN A SPATE OF BURGLARIES AND THEFTS FROM GARDENS IN HALLING RECENTLY

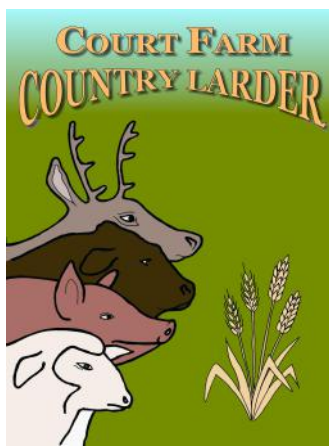
PCSO ALISTAIR HARDY will be attending Halling Community Centre during HALARA's Thurs Coffee Morning on the following dates:
 1 Dec 16 / 29 Dec 16 / 26 Jan 17

If you have any questions or concerns, please feel free to pop in and speak with him.

Neighbourhood Watch Office: MEDWAY POLICE STATION
 Purser Way, Gillingham, Kent, ME7 1NE

Police Emergency : 999
 Police Non-Emergency – 101

For free home safety advice or to see if you're eligible for a free home safety visit, please call 0800 923 7000



Court Farm Supports Jamie Oliver's Food Revolution Campaign 2017

Tania & Andrew Lingham have decided to get behind Jamie Oliver's Food Foundation and back its campaign called the Food Revolution Day. Its aim is to reduce child obesity in the UK, reduce sugar consumption and increase the number of people who regularly buy local produce and "cook it from scratch". Court Farm's Butchery & Country Larder has long been a proponent of healthy eating and freshly cooked meals. We will be reaching out to schools and other groups in the community to see how we can all find ways to get the "Food Rev" message out to children and families. If you would like to meet and discuss this healthy eating and local food initiative, please call Tania on 07841 913 561 or email marketing@courtfarm.org We will be offering more meat boxes as of 2017 that you can order and pay for online only, please sign up at www.pasturerearedgrassfed.com !

Yours in conscientious health,
Tania & Andrew Lingham



AVAILABLE TO HIRE FOR:

- Drama/Dance Performances
- Parties
- Wedding Receptions
- Funeral Wakes
- Business & Social Functions
- Sporting Activities



- Slimming World
- Bo-Peeps
- HALARA
- Health Clinic
- Legs, Bums & Tums

Please Support

Your Halling Community Centre

And Be Proud To Do So

- Badminton
- Zumba
- Pilates
- Bowls
- Duets Dance
- Toddler Football
- Youth Club



- Special rates for Children's Parties (Ideal for bouncy castle)
- Weekends and School Holidays
- Other rooms available for hire

All Enquiries, Please Contact:
01634 243696
hallingcommunitycentre@gmail.com





SASHDODDCOM



Computer and Laptop Repair Services



Non-Working Keyboards, Flickering Displays, Cracked Screens, Broken Power Input Sockets All Fixed



Custom Built Computers, Using **GENUINE** Microsoft Software

Trouble Shooting, Upgrades, Virus and Spyware Removal, Broadband and Wireless Setups, Home Networks, and More...

Reasonable rates, No call out fees, Times to suit you, including Evenings and Weekends

Call Sacha on 01634 249454, Or email sacha@sashdodd.com,
Or visit my web site at www.sashdodd.com



Sacha Dodd, 22 Low Meadow, Halling, Rochester





Residential & Commercial

Property Maintenance, Repair and Refurbishment

Property Maintenance
Emergency Repairs
Landscaping
Fencing
Brickwork
Plastering

Home Improvements
Decorating
Electrical
Plumbing
Carpentry
Structural Work

Security & CCTV
Double Glazing
Roofing
Drainage
Gutters & uPVC
Landlord Support

01634 296613 07704 317920 Contact@TProperty.co.uk www.TProperty.co.uk

DAVID TAYLOR



**Plumbing / Heating
Engineer**

GAS SAFE APPROVED

Boilers Serviced,
Central Heating
Bathrooms etc.



FREE ESTIMATES
07971 528465

CAZMADE JEWELLERY



*Many already made items listed, more new ideas to follow,
plus custom made enquiries welcome.*

Cazmade Jewellery, Gifts & Cards

<https://www.etsy.com/shop/Cazmade>
Please feel free to pop by and share to your friends. Thank you.

Custom Made Item Orders Welcome

Caz_101_798@hotmail.com

www.etsy.com/shop/Cazmade



Window Fix Direct
The Caring Company Working For Quality



Repairs and Installations
Windows, Doors, Conservatores
Fascia's and Guttering

Broken Locks ?

Draughty Doors & Windows ?

Loose Handles ?

Misted Glass Units ?

Damaged or Loose Hinges ?

Bi-Fold Problems ?

CALL NOW FOR A FREE QUOTATION

01634 863528

www.windowfixdirect.co.uk



PARTS COUNTER NOW OPEN



Unit 2, Bredhurst Business Park, Westfield Sole Road, Boxley, Kent. ME14 3EH



ANYONE WISHING TO ADVERTISE IN THE NEXT EDITION OF HALLING VIEW PLEASE SUBMIT YOUR ARTICLE/ADVERT BY:

16th February 2017

LATEST

Please send articles & adverts with payments payable to
Halling Parish Council to:

Bill & Trudi :

hallingclerk@btconnect.com

*Parish Office, Halling Community Centre
93 High Street, Halling ME2 1BS*

All adverts must be paid in advance or they will not be included.

Business advertising: Prices for x4 issues
MAR / JUNE / SEPT / DEC

Half Page £ 150 / Quarter £80 / Small Ad £50
(Charity Ads & Village Articles are free)

Payments for single issue Ads welcome
£45 / £25 / £15



The Chris Ellis Centre

Social club for older people

We provide high quality day services for people over 50

- Freshly cooked meal
- Transport provided
- A wide range of trips and activities
- Footcare

For more information call us on
01634 724745



HALARA

In September Members of Halling Active Retirement Association celebrated their Chairman, Norman Head's 80th Birthday, by presenting him with a special cake and a large birthday card. Norman was delighted with the cake and thanked members for the kind thought. He has been Chairman of the group for over ten years and is talking of retiring next year but knowing Norman's devotion to the job, that remains to be seen!! The cake was presented to Norman by Ann Graves, former Secretary to HALARA. The beautiful cake was made by Petita Wiles. Norman is seen in the photograph with Carole Nunn, Secretary. Photo taken by Pat Hubbard.



CHANGES TO PROGRAMME:

Meetings

25 November 2016 – Will now be a **Games Afternoon**
Board & Card Games plus Curling. Bring along your favourite board game.

27 January 2017 – **Quiz**
24 February 2017 – **HALARA Players entertain** with play, poems, jokes, etc.

All sorts of people can be on-call firefighters... and we want to hear from you!

On-call firefighters are paid to be available for an agreed number of hours.

During that time you can go about your normal life at home or work, but if you get a call to say we need you, you must be able to drop what you are doing and get to the station within five minutes.

The hours we offer will be based on what the local station needs to deal with the risk in your area.

To be an on-call firefighter, you must:

- be at least 18 years old
- be physically fit
- live or work within five minutes of one of the recruiting stations and be able to offer the hours we need

Check our website for details including recruitment criteria – www.kent.fire-uk.org/oncall



APPLY TODAY
all sorts of people can be
on-call firefighters

visit www.kent.fire-uk.org/oncall

Jack, 28
Office administrator
Favourite food: Curry

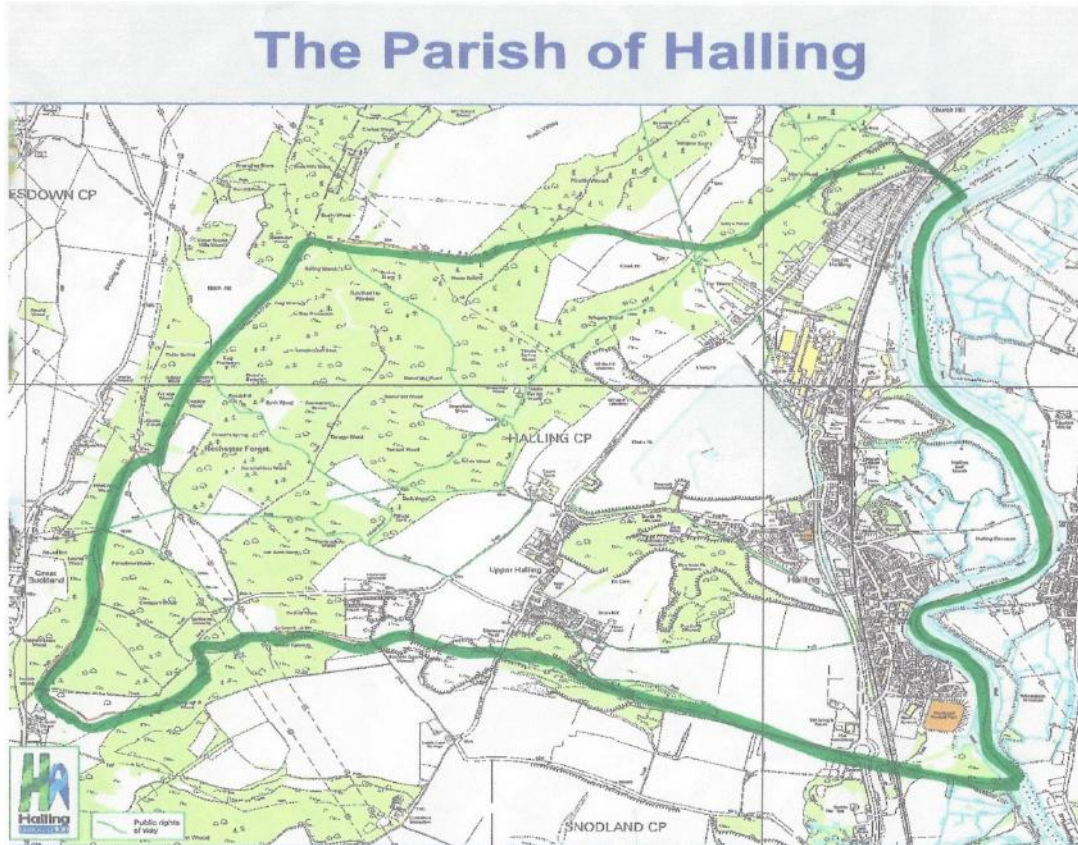
Chalee, 31
Quantity surveyor
Special skill: Watercolours

Elena, 23
Fashion designer
Supports: West Ham Utd

Yusuf, 47
Teacher
Favourite animal: Cat



Have your say:



We appreciate not everyone can attend PARISH COUNCIL MEETINGS where matters can be raised by residents under parishioners' question time.

The Parish Office is open on Mon and Friday mornings and 9.30am – 4pm Wednesdays for you to call in with any issues you need the Clerk to pass on to the Councillors.

Alternatively, you can email us on hallingclerk@btconnect.com, or write your questions below and return to us at the office in the Community Centre and your comments will be passed on.

There are 7 notice boards around the village which are updated regularly with village information and also you can read what's going on, on our website WWW.HALLING-PC.CO.UK.

Please remember your Councillors act for you voluntarily in the interest of the village as a whole.

To Bill Swan
Clerk to Halling Parish Council
The Community Centre, 93 High Street, Lower Halling, Rochester ME2 1BS

S

TO : Halling Parish Council, Clerk

.....

.....

.....

.....

.....

.....

.....

.....



SANTA VISITS HALLING 2016



Santa and his elves will be making their annual trip to Halling on **Friday 23rd December** from Lower Halling through to Upper Halling starting at approximately 4.00pm. If you live in Upper Halling it is likely that we will get to you after 8.00pm. Please note if you are not at home when the sleigh arrives unfortunately we will be unable to return at a later time.

For all children at Halling School that don't live in the village (Holborough, Snodland etc.) we will be adding two additional Santa stops, one outside the Community Centre between 5.30-6.00pm and one outside the Newtown Social Club between 8.00-8.30pm. If you are interested please fill in the slip below and write clearly on the present **COMMUNITY CENTRE STOP** or **NEWTOWN SOCIAL CLUB STOP** and return to the school on the dates specified. This year St Andrews Park will be included in the Sleigh Run.

If you would like Santa to deliver a present to your child, please provide the following:-

- a wrapped present **clearly marked** with the child's name and delivery address
- the completed form provided below (please **DO NOT** attach it to the present)
- the amount of £3.00 for 1 child, £5.00 for 2 children, £7.00 for 3 children, £1 each for any extra children

Please hand **ALL OF THE ABOVE** to a member of the PTA who will be in the entrance hall at Halling Primary School at 2.30pm until 3.30pm from **Monday 5th December** until **Friday 9th December**. **PLEASE NOTE:** Presents can only be accepted during these times - please **DO NOT** ask school office staff as they will be unable to assist.

Presents must be at the school **NO LATER** than **Friday 9th December 2016** as they then need to be sorted and boxed ready for the sleigh run, any presents that are received after **Friday 9th December** **WILL NOT** be accepted (even if left with the office - and will need to be collected). Presents must be small, **not** fragile, heavy or bulky etc.

The sleigh run is organised **ENTIRELY** by the members of the Friends of Halling PTA who give up their time to organise and run it for the residents of Halling and a special thanks goes to Martyn Court of Total Property who gives up his time every year to pull the sleigh.

Thank you for your continued support in making the sleigh run so successful and don't forget to put your loose change into our collection buckets as we make our way through Halling!

Wishing you a Merry Christmas and a Happy New Year
From Santa, the Elves and the Friends of Halling PTA

DO NOT ATTACH THIS FORM TO PRESENTS - PRESENTS MUST BE INDIVIDUALLY LABELLED WITH THE CHILDS NAME AND DELIVERY ADDRESS

Name of Child/Children _____

Delivery Address (this does NOT have to be your home address but MUST be the address where your child will be on the night).

Amount Enclosed £ _____
(£3.00 - 1 child, £5.00 - 2 children, £7.00 - 3 children, £1 each for any extra children)

FOR PTA USE ONLY		
Amount: £ _____	Number of Presents: _____	Box No: _____
Signed: _____		