

HALLING VIEW

Picturesque Halling : Photo courtesy of Elaine Beal



Well what a Christmas that was!!! The village was resplendent again with its enormous Christmas tree which was almost on par with the tree in Trafalgar Square! Thanks to the one member of the public who came along to help the Councillors put the tree up. Then there was the Grotto at Bishop's Palace, more of that inside, followed by the Sleigh Run around the village organised by the school PTA. How many other villages in Medway manage so many things in such a short time? I feel proud to live in Halling.

Looking forward now to the rest of the year. I am pleased to tell you, that following careful financial management in 2016, Halling Parish Council is keeping the annual parish precept at the same level as the previous year.

HPC was successful in its bid with Tesco Bags of Help and has been awarded £8,000 towards the cost of outdoor gym equipment for the lower recreation ground.

HPC is currently evaluating the bids for new play equipment in the upper recreation ground and hopefully this will be decided before the next edition of Halling View. We aim to commence these works on receipt of the funds from the sale of the Fire Station.

A FunDay is planned for this year, and we are thinking of fireworks down on the Marsh. Keep an eye on our noticeboards and the parish website for information through the year.

Unfortunately, complaints are coming into the office thick and fast about dog poo around the village and the few inconsiderate owners who insist it is not their duty to pick up after their dog(s). Medway Council have been approached and regular dog warden patrols have now been set up in the village. The Community Officers have the power to issue warnings and fines if dogs are off leads on public pavements, foul the footpath or enter our upper or lower recreation grounds.

Chris Herbert, Chairman, Halling

Clerk's Office Opening Hours:

Mon & Fri 9.30am – 12pm / Wed 9.30am – 4pm

Halling Community Centre

01634 241551

hallingclerk@btconnect.com

<http://www.halling-pc.co.uk>

Bill Swan, Clerk

*Please read noticeboards and see website
for details of next HPC meeting*

HALLING PARISH COUNCIL

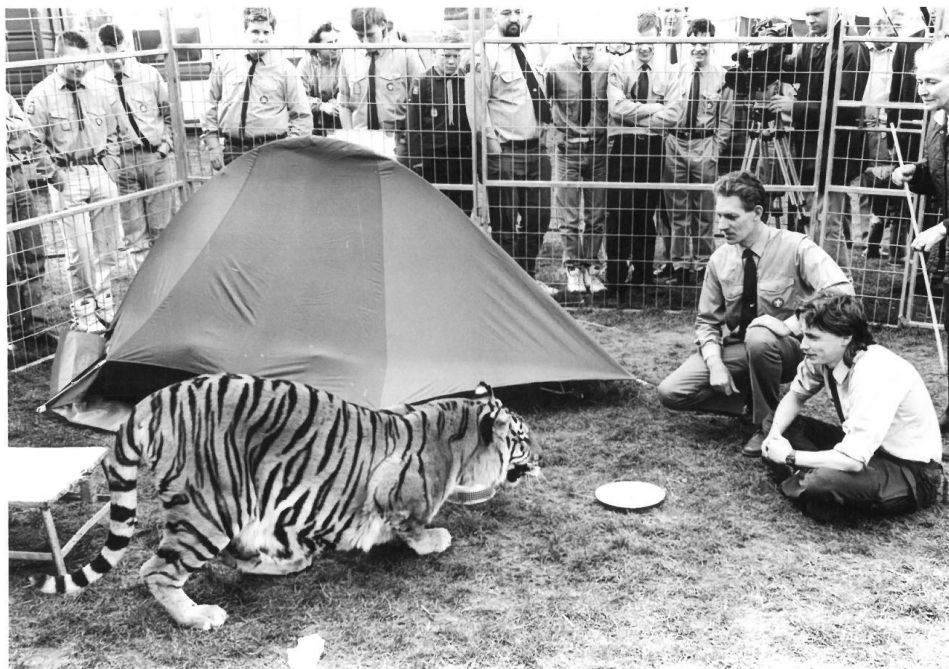
Lower Ward: Councillor Les Hitchcock
Councillor Chris Herbert
Councillor Andy Simpson
Councillor Richard Thorne
Councillor Kelly Talbot
Councillor Paul Crispe

Upper Ward: Councillor Matt Fearn
Councillor George Wenham
Councillor Trevor Reynolds

North Ward: Vacancy
Vacancy

PARISH COUNCILLOR VACANCIES

There are two vacancies on the Parish Council. We are looking for dedicated villagers who are willing to give up their time voluntarily for the good of the village. Previous experience is not necessary and training will be given. Applicants must be a British Subject over 21 years old, be on the electoral roll or have lived, owned or occupied property in the village for over 12 months. If not a resident of the village you must live within 3 miles of Halling. Please apply to HPC or speak to The Clerk, Bill Swan or talk to one of your Parish Councillors for more details.



COMPETITION TIME

£10 will be given to the first person to correctly name the Parish Councillor in the photo and the nearest job description of the lad sitting crossed legged in the tiger enclosure.

This photo was taken at Mary Chipperfield's Circus at the Black Lion recreation area in Gillingham in the early '90s. Email your answers and contact details to:

hallingclerk@btconnect.com

Diary Date:

VILLAGE QUIZ NIGHT IN SUPPORT OF KENT ASSOCIATION FOR THE BLIND

Sat 25 March 2017

7pm start

Halling Community Centre

£3 on the door

6 people per team



Local Charity sponsored by HALARA

Ways that your Council can help:



Who is UK Power Networks?

We own and maintain electricity cables and lines across London, the South East and East of England making sure the lights stay on – including in your area. We do not generate or sell energy. We have reduced the number and length of power cuts over recent years, though they can still happen occasionally for a range of reasons and we recognise that some customers need extra help in a power cut.

What is the Priority Services Register?

Our register enables us to quickly identify customers who may be vulnerable or need extra help when their electricity is off, as efficiently as possible.

Who is eligible to join?

Generally you can apply to be on the register if you have a disability or health condition, are of retirement age, have a medical dependency on electricity (e.g. nebuliser, ventilator, Careline), or have a child under five. We run more than 20 eligibility categories so call us to find out more.

What are the benefits of signing up?

If you're on the register it doesn't mean your power will be restored quicker than others, but you can access extra help services including:

- A 24 hour priority phone number
- A dedicated team who will contact you to keep you updated during a power cut
- Tailored support if needed such as home visits, hot meals, advice and keeping your friends and relatives updated
- In certain scenarios we may also offer a free hotel overnight and transport to the hotel

What are the benefits to parish/town councils?

By showing people how to sign up, you will be helping protect your most vulnerable residents during a power cut.

Did you know?

Only 1 in 8 people over 80 knew about the register in a recent survey. Help us change that in your community.

Each parish and town council is different and is able to help in a different way. Please see our 'Ways that your Council can help' factsheet for some amazing examples of how councils help vulnerable residents join the Priority Services Register.



How do we sign people up?

Help them complete one of the 50 registration forms included in this pack, then detach it from the leaflet and pop it in the post – no need for an envelope or a stamp.



Or contact us free on 0800 169 9970, at psr@ukpowernetworks.co.uk or see www.ukpowernetworks.co.uk/ParishCouncils

ANYONE WISHING TO ADVERTISE IN THE NEXT EDITION OF HALLING VIEW PLEASE SUBMIT YOUR ARTICLE/ADVERT BY:

17th MAY 2017

LATEST

Please send articles & adverts with payments payable to
Halling Parish Council to:
The Clerk :

hallingclerk@btconnect.com

Parish Office, Halling Community Centre
93 High Street, Halling ME2 1BS

All adverts must be paid in advance or they will not be included.

Business advertising: Prices for x4 issues
MAR / JUNE / SEPT / DEC

Half Page £ 150 / Quarter £80 / Small Ad £50
(Charity Ads & Village Articles are free)

Payments for single issue Ads welcome
£45 / £25 / £15

Biker Down! is a FREE 3 HOUR COURSE

- 1 Accident scene management
- 2 First Aid for motorcyclists
- 3 The science of being seen

On completion, you'll get a KFRS Certificate of Attendance and a biker's First Aid kit

Email bikerdown@kent.fire-uk.org
visit www.bikerdown.info or
search **Kent Fire Bike** on Facebook

Kent Fire & Rescue Service

HALLING ASSOCIATION
SMALL PROJECTS FUND

Who is Halling Association?

HA is a local partnership of the following groups who contribute monies to fund local projects:

- HALLING PARISH COUNCIL**
Medway Council
Tarmac
Redrow
Trenport

Grants Criteria

This grant scheme is run by the Halling Association. This is a local partnership of private, public and voluntary organisations that supports projects for the benefit of the parish of Halling.

Who can apply?

- Only groups and organisations based in Halling, or other groups who want to carry out a project in the parish, or to benefit local residents.

How much funding is available?

- Grants of up to a maximum of £250 are available.
- There is a total budget of £1500 available for small projects in one year.

How long do we have to wait to hear the outcome of our application?

- Providing we have all the information we need, you should hear within 6 weeks of submitting the form.

What sort of projects are eligible?

- The Halling Association will be open to helping a wide range of projects, such as events or activities being organised by a group, improvements to a community building, or environmental projects.

How can we apply for a grant?

<http://www.medway.gov.uk/thecouncilanddemocracy/parishcouncils/hallingassociationproject.aspx>

Medway Council officers:

Ross Crayford : 01634 331629

Email: ross.crayford@medway.gov.uk

Address: Planning Policy, Medway Council, Gun Wharf, Dock Road, Chatham, Kent, ME4 4TR

HALLING MEDICAL CENTRE – 01634 240238

Monday	8.30 – 1.30pm	3.30pm – 6.30pm
Tuesday	8.30 – 1.30pm	3.30pm – 8.00pm
Wednesday	8.30 – 1.30pm	Closed
Thursday	7.15 – 1.30pm	3.30pm – 7.00pm
Friday	8.30 – 1.30pm	Closed

CUXTON MEDICAL CENTRE – 01634 714317

Monday	8.30 – 1.30pm	3.30pm – 6.30pm
Tuesday	8.30 – 1.30pm	Closed
Wednesday	8.30 – 1.30pm	3.30pm – 7.00pm
Thursday	8.30 – 1.30pm	Closed
Friday	8.30 – 1.30pm	3.30pm – 7.00pm



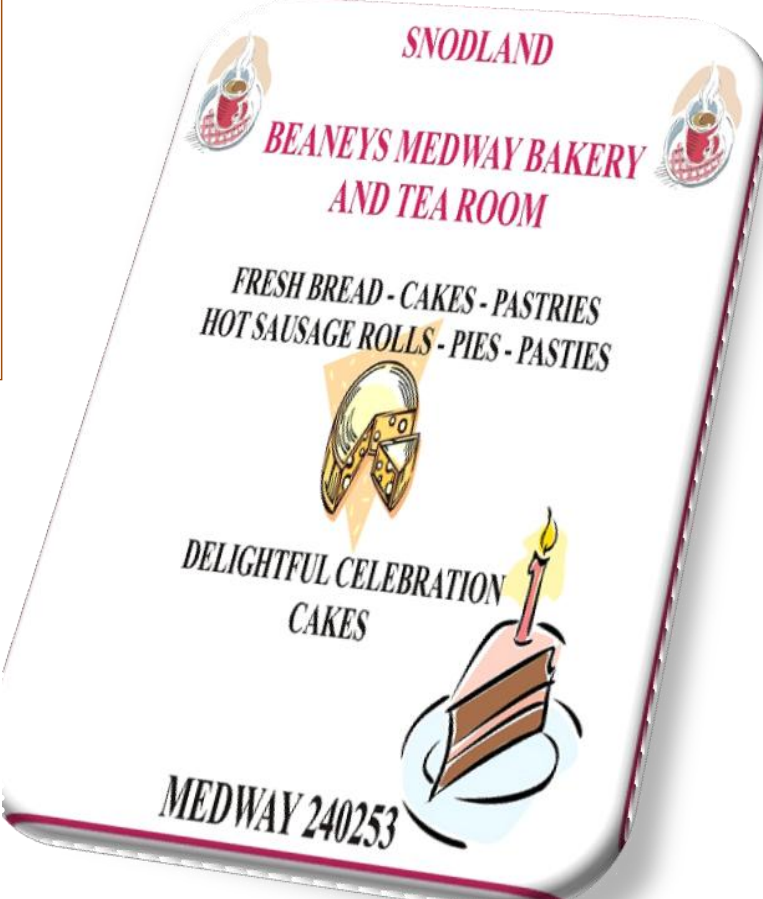
Cupcakes made with Passion
Tasha Cupcake Denney

Halling
07716871320
Cupcakesmadewithpassion@yahoo.com
Email/phone for prices special price for 12 Cupcakes from £15

Halling Historical Society present a Diary for 2017 at The Jubilee Hall, Browndens Road, Upper Halling

20th April 2017 Penny Harris - Potholes, Pits and Paradise 7.30pm
15th June 2017 Wilf Lower - T.V Golden Years 7.30pm
17th August 2017 Peter Hartley - Diamond Queen 7.30pm
19th October 2017 Stuart Robinson - Curiosities of London 7.30pm
14th December 2017 Wilf Lower - Last Days of the Music Hall 7.30pm

Tea, coffee and raffle. All visitors welcome £2.50



SNODLAND
BEANEYS MEDWAY BAKERY AND TEA ROOM

FRESH BREAD - CAKES - PASTRIES
HOT SAUSAGE ROLLS - PIES - PASTIES

DELIGHTFUL CELEBRATION CAKES

MEDWAY 240253

Whether the Weather Be Hot or Whether the Weather be Not

We've had some very cold days this Winter – not much snow so far, but very hard frosts, day after day, sometimes never melting in my garden which is shaded on all sides. Such days can be very beautiful. Mist hanging over the river or swirling among the trees creates an air of mystery. The sun shining on hoar frost illuminates frail twigs and mighty boughs alike with clear, crystalline light, bright white against a deep blue sky. Rose hips and the few remaining deeply coloured autumn leaves glow in the freezing air. My dog Tommy rolls in the frosty grass and, as the mud is frozen, we come home from our walks in the woods with clean fur and shoes.

On the other hand, the heating is running all the time and the gas bill is getting bigger and some days, for all the best efforts of my new boiler, it remains decidedly chilly indoors. Pity the homeless on nights like this. Remember those who can't afford to heat their homes. If your budget is limited, heating really must be one of your highest priorities, along with food. Don't get sick by trying to save money.

In the cities, too, this cold, still air has been associated with dangerously high levels of air pollution. We need to do something about emissions whether from vehicles, domestic heating or factory chimneys.

A lot of people seem to be despairing. Many of us are worried about what is happening on the international stage, seemingly intractable problems of conflict and hardship. Many of us worry about our own country and where it's going. Some of us may feel overwhelmed by our own personal problems – ill health, unemployment, family or money troubles. I think many people feel that there is a lack of leadership where it matters and are troubled by rapid changes in social attitudes which seem to undermine the values which provide us with our sense of security and on which we have depended for our well-being and the well-being of society in general.

On one very cold day, an iron frost gripping the soil, I noticed how many young plants there are coming through – forget-me-nots, daffodils, some beginning to form buds – and the snowdrops are already in bloom. Spring is coming. The Winter will end. There is always hope.

By hope, I don't mean a mindless optimism, an unfounded belief that something will turn up. I'm not blind to the reality of the troubles we face or might have to confront in the future. My hope is grounded. I know that the forget-me-nots and the daffodils will bloom. The days will get longer. It will become less cold and even warm. My hope is grounded on what I know. Rather, it is grounded on Whom I know. Having genuine faith in the living God, I have every reason to hope, every confidence. As my grandmother used to say, "We know not what the future holds, but we know Who holds the future."

Good Friday is real. Jesus died in agony on the Cross, having been betrayed by one friend, abandoned and denied by the others, lied about, mocked and flogged with a Roman punishment whip which was in itself capable of killing people. We may well have our own Good Fridays to face, when everything is dark, all is lost and even God is apparently absent. In those times we know that we can pray to God through Jesus because Jesus understands through His own experience what we are going through, the very worst we can suffer.

Easter too is real. Good defeats evil. Life is stronger than death. Jesus is the Victor over the devil. Jesus is with us in the way of the Cross. Eternal life is the end (in both senses) of that path and the path itself (believe it or not), grasped through putting our faith in Jesus and holding His hand on the road we walk in our lives. We rightly speak of the sure and certain hope of the resurrection to eternal life – not mere optimism or a groundless belief, but sure and certain hope, based on a true and lively faith.

Roger Knight, Rector of Cuxton and Halling.

Good Friday (14th April): 10.00 Family Service at St Michael and All Angels Cuxton, 12.00 Three Hour Devotion at St John the Baptist Halling. (You may come for all or part of the three hour service.)

Easter Day (16th April): Holy Communion 8.00 in Jubilee Hall, 9.30 at St Michael's & 11.00 at St John's.

HALARA

At the October meeting members of Halling Active Retirement Association were delighted to celebrate the 90th Birthday of a dear and valued member, Bet Hodkin. Bet is seen in the photograph with her daughters, Sandra & Susan. She joined HALARA in 1998 and has always been an active member of HALARA; serving on the Committee, organising theatre trips, collecting monthly fees, helping with Coffee Mornings and the Games Afternoon. Bet received a special cake from her daughters and was presented with a bouquet, from HALARA, by Betty & Norman Head (Chairman).

Photograph taken by Pat Hubbard.



Slimming World

HALLING
COMMUNITY CENTRE

Ring Sharon:
01634 243198
07909 051151



Thursdays
5.30pm – 7pm
7.30pm – 9pm



SNODLAND



BEANEYS MEDWAY BAKERY
AND TEA ROOM

FRESH BREAD - CAKES - PASTRIES
HOT SAUSAGE ROLLS - PIES - PASTIES



DELIGHTFUL CELEBRATION
CAKES



MEDWAY 240253

FOOTPATH NOTES

Progress is frustratingly slow towards getting a permissive path to link the bottom of the Plough Path with Whitting's Farm, and to save walkers having to cross the dangerous A228 by-pass now increasingly busy with traffic from the Wouldham side of the river. First steps were taken in May 2015(!), but, at the eleventh hour – a few weeks ago – doubts were again cast again on the ownership of some the land along the line of the proposed path, and a document acceptable to all three parties, HPC, Tarmac, and Medway Council is still to be signed. HPC has already agreed to pay for the installation of an arc kissing-gate to provide wider access, and stock-fencing to protect a tenant farmer's field.

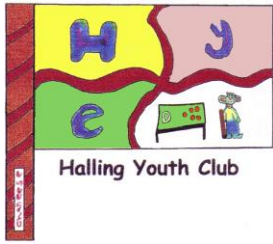
Again, progress is slow towards getting the footpath RS201 back to its original line. Redrow have made a good job of surfacing the path from where it currently starts just beyond the wide metal gates near the allotment round-about, but, inexplicably, neat stone kerbs stop at the last 100 metres to Pilgrims Road, and the tarmac surfacing has been left to puddle. No sign yet of the promised footbridge over the A228 to provide pedestrian safety by linking the footpath with Kent Road. Eventually, it *will* be a more attractive footpath route, but the dangers of the deep lake (DANGER – DEEP WATER signs have always been displayed), and the need for ready access by utility companies to a parallel-running underground fuel-pipe and the electric cables supported by the pylon preclude, in my opinion, a designated picnic area with picnic 'furniture'.

The marsh paths are especially muddy. Their slipperiness this winter has come principally from walkers – which is good. A concern is that if cattle come back to that part of the marsh which is Halling Common – the broad areas either side of Marsh Road all the way from the marsh gate to the river – there will be even more damage to paths. Only the north side of Marsh Road is protected from the hooves of cattle by wire-fencing and two gates which it is imperative to keep shut. There are plans to erect more fencing on the south side of Marsh Road to protect footpaths, but such plans – and other beneficial ideas for Halling Common which belongs to the people of Halling, and the enjoyment of the people of Halling – are heavily dependent on an inflow of cash from the sale of the old Fire Station.

What cannot be remedied is the very poor state of the footpath RS320 where it crosses Kent Wildfowlers' land, and to which cattle have unrestrained access. Much of the damage to the footpath just before where the Wildfowlers' land ends has been caused by drainage work to prevent the back-flow of water onto the low-lying crop-bearing fields of Marsh Lodge Farm, but that damage to the footpath will largely repair itself – access by cattle aside.

Predictably, vandals have been at work. Wire has been kicked down at the side of some stiles (necessary to restrict cattle movement), and some top bars on stiles have been removed. Part of the plans (alluded to above) is to do away with stiles where practicable, and for the installation of wide kissing-gates to permit access by *all* – which is a positive note to end on.

Barry Barnes
Co-opted Footpaths Officer



We at Halling Youth Club are busy organising trips and activities. Hopefully, this will include a coach trip with family members to either a zoo or the seaside. Also on the agenda will be climbing, trampolining, bowling as well as the in-house activities.

Recently the members were taught a little about the Chinese New Year of the Rooster. To commemorate this the children made pictures of Roosters and had a go writing in Chinese.

If you wish to join in the fun on a Friday evening, even if it is only occasionally, please come down any Friday evening between 6pm and 9pm to talk to us. Any help, no matter how little, would be very much appreciated. You may have a skill that the children would like to learn, no matter how insignificant it may seem to you (even how to maybe hit the table tennis ball over the net properly!).

As always, a big thank you to all who give up their free time to keep Halling Youth Club open and running successfully.

This club is held in the Community Centre on a Friday evening.

1st Session is for 8 to 11 year olds.
Times - 6pm till 7.30pm
2nd Session is for 11 to 15 year olds.
Times - 7.45pm till 9.15pm



We are always looking for more Adult Helpers and are grateful for any and all assistance with this thriving club. If you can spare us a little of your time or need to contact us for any reason please call into the club during opening times as above Or phone -

Paula Wilkins-Smith @ 07969342953 or Les Hitchcock @ 07518931508



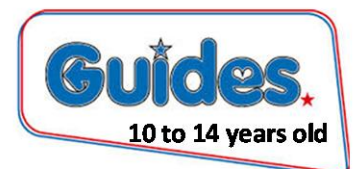
JOIN US!!!!

Arts & Crafts

new friends
Fun and Games



For Girls Only
Aged 5 and above



CAMPS, HOLIDAYS & TRIPS

Rainbows and Senior Section contact; Maggie Palmer – 07548152191 email; bluebellpalmer@aol.co.uk
Brownies and adult volunteers contact; Trudy Fenton-Scott – 07714918542 email; trudybarnowl@orangehome.co.uk
Guides contact; Sarah Pettit – 07957380142 email; dippyduck81@yahoo.co.uk

PICK UP YOUR DOG MESS
STOP being so selfish to other residents in our village

If another resident sees you flouting the rules, they have the right to report you to Medway Council anonymously and they should not have to put up with verbal abuse if they approach you directly.



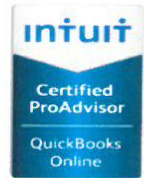
Kennel Cough is on the rise in Halling and dogs can catch this via infected dog's faeces. So, if you care about dogs, **PICK IT UP**

Du4Accounts



All your accounting needs!

- Self-Assessments & on-line submission
- Bookkeeping
- VAT returns
- Payrolls – PAYE & CIS
- Accounts preparation
- Auto Enrolment – workplace pensions admin
- HMR&C on-line returns



Call Carol today!

- Sage Accounts
- QuickBooks
- Xero (Cloud) Software
- Microsoft Excel

Carol Dufour
Du4Accounts
75 Kent Road
Halling
Rochester
Kent
ME2 1AT

Phone 01634 244807
Mobile 07765 351064
Email: Carol@du4accounts.co.uk

Du4Accounts
All your accounting needs!



Dandelion Time

*Restoring hope
to young lives*

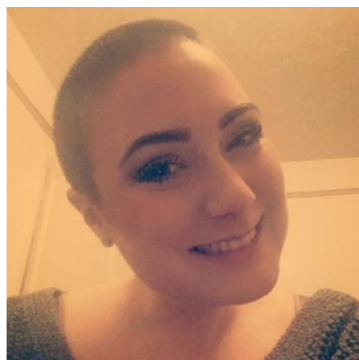


Sam said she would if they raised £5K. Well they did!

When Jon Harris had two family members diagnosed with cancer, he decided to raise money for charity. Both he and George Tilbury had their heads shaved and asked Sam if she would shave hers too for Jon's mum.

On the evening of January 28th at The Five Bells, Sam Thomas had her hair shaved off as they reached the £5,000 mark for The Dandelion Time charity.

Thank you to everyone who donated.



BEV ROUSSEAU THERAPIES

fully insured and CRB checked
Qualified Practitioner

NLP
Life Coaching
Tapping (EFT)
Clinical Hypnotherapy

Helps with phobias, weight, motivation, smoking, anxiety, stress, pain, confidence, relationships
infact – almost anything you can think of!

INTRIGUED?

contact **Beverley**
01634 240190 or

beverleyann.wdd012@gmail.com

**PLEASE LEAVE YOUR NAME AND CONTACT
DETAILS CLEARLY TO ENABLE ME TO RETURN
YOUR CALL**

Please include a brief outline of your issues.



Photo courtesy of Carol Parker

As you can see, choosing a photo for the front page of Halling View is becoming harder and harder! Photographic talent is phenomenal in this village: just visit Facebook's Picturesque Halling to see some of the things we take for granted.



Photo courtesy of Carol Parker



Photo courtesy of Elaine Beal



Photo courtesy of Mike Connor



HALLING GARDENING SOCIETY
PRESENTS

**MAKE 2017 YOUR BEST YEAR YET
FOR GROWING DAHLIAS**

7.30pm MONDAY 13th MARCH
JUBILEE HALL, BROWNDENS ROAD, UPPER HALLING ME2 1JH

Darren Everest, expert gardener, judge and Nurseryman will share his experience of raising, showing and growing on DAHLIAS for the garden, flower arranging and Show Bench.

Ask questions of an expert and find out more!

He will also have plants available of both his dahlias and Sweet Peas for sale at the end of the meeting.

Refreshments included. Members £2.00, Non-members £3.00.

Raffle

Visitors very welcome.

Join our Club (£3) on the night and enter our Spring Show on 26th.
Phone Pat on 01634 240480 if you need more information.



HALLING GARDENING SOCIETY

**SPRING FLOWER
AND VEGETABLE
SHOW**

to be held on
SUNDAY 26TH MARCH 2017
3.00 p.m. - 5.00 p.m.

HALLING JUBILEE HALL

Exhibits to be staged between 10.00 am - 12.00 am

Judging to start at 12.30 p.m.

Auction - 4.30 p.m. Raffle - 4.45 p.m.

Admission to Show - 50p
Members and Children Free

A.G.M - 13th NOVEMBER 2017 - 7.30 PM



HALLING PARISH COUNCIL



Public Consultation on Improvements to the Upper Recreation Ground

The Recreation Committee will be holding a public consultation at the JUBILEE HALL on

**SATURDAY 25TH MARCH
from 1.30 – 3pm**

to discuss future improvements to the children’s play area in the Upper Recreation Ground.
The Parish Council would like to invite all residents, parents and children to come along and meet the Committee,
look at examples of play equipment and put forward their ideas.

YOUR VIEWS ARE IMPORTANT TO US SO PLEASE COME ALONG

People + Over 50 Retired or Semi-Retired = FUN!

HALARA
Halling Active Retirement Association

Short Mat Bowls, Coffee Morning, Art Class, Indoor Games, Speakers, In-House Entertainment, Quiz, Theatre Trips, Bingo, Outings, Rambles

Meetings held on Last Friday of the Month
Jubilee Hall Browndens Road Upper Halling
2pm-4pm
Contact: 01634 716 049
www.halara.talktalk.net

Visitors to the Cemetery
(Cemetery Road)

Please do not just throw
away your tributes onto
grass cuttings or around
graves/general areas.

To help keep the cemetery
tidy, please put used floral
tributes in or beside the bin
or take them home again.

Many Thanks

NEXT POLICE SURGERY DATES:
at
HALLING COMMUNITY CENTRE

Thursday 23rd March 17 9.30am
Thursday 20th April 17 9.30am

PLEASE LOCK
YOUR PROPERTY
SECURELY



Neighbourhood Watch Office:

MEDWAY POLICE STATION
Purser Way, Gillingham, Kent, ME7 1NE

Police Emergency : 999
Police Non-Emergency – 101

For free home safety advice or to see if you’re eligible for a
free home safety visit, please call 0800 923 7000



HALLING Women's Institute

**THIRD WEDNESDAY OF
THE MONTH** *at* **7.30 PM**

**JUBILEE HALL
BROWNDENS ROAD
UPPER HALLING
ME2 1JH**

hallingwi@yahoo.com

New Members and Visitors Welcome!

Book your FREE group visit now



ROAD SAFETY EXPERIENCE KENT & MEDWAY

The UK's ONLY interactive road safety education centre
Designed to appeal to 14-25 year olds

Help young people to:

- improve their road safety skills
- learn from the experience of others
- enjoy interactive learning zones
- make informed decisions

FREE to schools and colleges

BOOK NOW!
www.roadsafetyexperience.co.uk

201604-0162



**AVAILABLE TO HIRE
FOR:**

- Drama/Dance Performances
- Parties
- Wedding Receptions
- Funeral Wakes
- Business & Social Functions
- Sporting Activities



Slimming World
Bo-Peeps
HALARA
Health Clinic
Legs, Bums & Tums

Please Support Your Halling Community Centre

And Be Proud To Do So

Badminton
Zumba
Pilates
Bowls
Duets Dance
Toddler Football
Youth Club



Special rates for Children's Parties
(Ideal for bouncy castle)
Weekends and School Holidays

Other rooms available for hire

All Enquiries, Please Contact:
01634 243696
hallingcommunitycentre@gmail.com





SASHDODDCOM



Computer and Laptop Repair Services



Non-Working Keyboards, Flickering Displays, Cracked Screens, Broken Power Input Sockets All Fixed



Custom Built Computers, Using **GENUINE** Microsoft Software

Trouble Shooting, Upgrades, Virus and Spyware Removal, Broadband and Wireless Setups, Home Networks, and More...

Reasonable rates, No call out fees, Times to suit you, including Evenings and Weekends

Call Sacha on 01634 249454, Or email sacha@sashdodd.com,
Or visit my web site at www.sashdodd.com



Sacha Dodd, 22 Low Meadow, Halling, Rochester





Residential & Commercial

Property Maintenance, Repair and Refurbishment

- | | | |
|-----------------------------|--------------------------|----------------------------|
| Property Maintenance | Home Improvements | Security & CCTV |
| Emergency Repairs | Decorating | Double Glazing |
| Landscaping | Electrical | Roofing |
| Fencing | Plumbing | Drainage |
| Brickwork | Carpentry | Gutters & uPVC |
| Plastering | Structural Work | Landlord Support |

01634 296613 07704 317920 Contact@TProperty.co.uk www.TProperty.co.uk

DAVID TAYLOR



**Plumbing / Heating
Engineer**

GAS SAFE APPROVED

Boilers Serviced,
Central Heating
Bathrooms etc.



FREE ESTIMATES

07971 528465

CAZMADE JEWELLERY



*Many already made items listed, more new ideas to follow,
plus custom made enquiries welcome.*

Cazmade Jewellery, Gifts & Cards

<https://www.etsy.com/shop/Cazmade>
Please feel free to pop by and share to your friends. Thank you.

Custom Made Item Orders Welcome

Caz_101_798@hotmail.com

www.etsy.com/shop/Cazmade



Window Fix Direct
The Caring Company Working For Quality



Repairs and Installations
Windows, Doors, Conservatores
Fascia's and Guttering

Broken Locks ?

Draughty Doors & Windows ?

Loose Handles ?

Misted Glass Units ?

Damaged or Loose Hinges ?

Bi-Fold Problems ?

CALL NOW FOR A FREE QUOTATION

01634 863528

www.windowfixdirect.co.uk



PARTS COUNTER NOW OPEN

Unit 2, Bredhurst Business Park, Westfield Sole Road, Boxley, Kent. ME14 3EH





Here is a small selection of photos from the fantastic event held at the Bishop's Palace last Christmas.

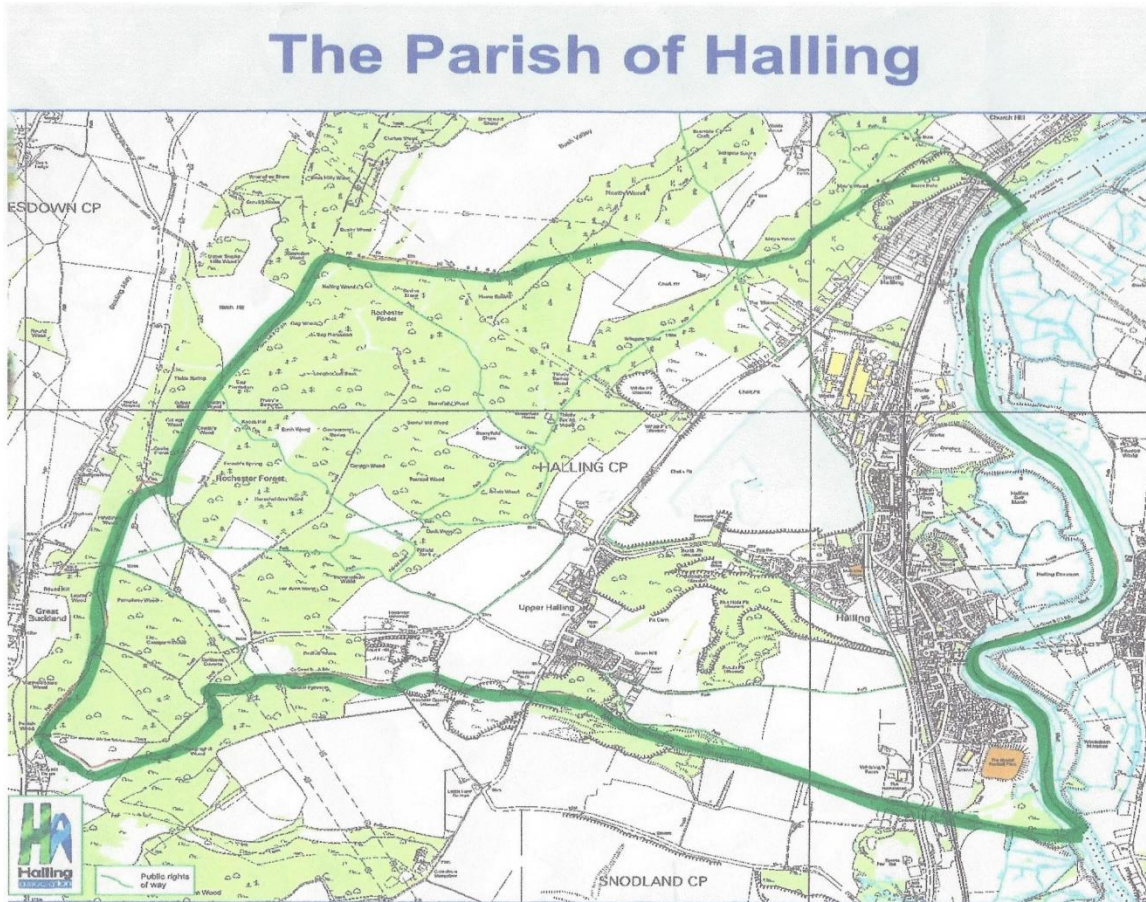
Sam Thomas at the Five Bells had the original idea which was expanded by the Parish Council. Sam and The Parish Council would like to thank everyone who helped out in organising the event and on the day.



In particular, we would like to thank, Father Christmas and his Elves, his Reindeer and the volunteers who set up Santa's grotto and packed it away again ready for his Sleigh Run.



Have your say:



We appreciate not everyone can attend PARISH COUNCIL MEETINGS where matters can be raised by residents under parishioners' question time.

The Parish Office is open on Mon and Friday mornings and 9.30am – 4pm Wednesdays for you to call in with any issues you need the Clerk to pass on to the Councillors.

Alternatively, you can email us on hallingclerk@btconnect.com, or write your questions below and return to us at the office in the Community Centre and your comments will be passed on.

There are 7 notice boards around the village which are updated regularly with village information and also you can read what's going on, on our website WWW.HALLING-PC.CO.UK.

Please remember your Councillors act for you voluntarily in the interest of the village as a whole.

To Bill Swan
Clerk to Halling Parish Council
The Community Centre, 93 High Street, Lower Halling, Rochester ME2 1BS

✂

TO : Halling Parish Council, Clerk

.....

.....

.....

.....

.....

.....

.....

.....

.....

.....